



Published by:

the Self-government of the City of Lenti in the framework of the City Cooperation II project (ATHU018), 2019

Responsible publisher:

László Horváth, Mayor of the City of Lenti

Printed by:

Mauz Ltd.

Assisted by:

Pannon Local Product Non-profit Ltd.



This publication is part of the INTERREG V-A Austria-Hungary Programme, with the support of the European Regional Development Fund, European Union and co-financed by the Hungarian Government.

### Felsőszér 15/A, 9943 Szalafő

GPS: 46.870906, 16.343447

#### Batha-cottage: extraction of vegetable oil specialties, traditional oil pressing

Opening hours: all year round

In addition to the knowledge inherited from grandparents, they produce excellent oils, seed creams, seed meal and fruit vinegar.

### Papszer 1., 1/a., 2., 9944 Szalafő

GPS: 46.870590, 16.359886

#### Múltidéző Porta: authentic building of Őrség

Opening hours: 1st Apr - 31st Oct, upon prior arrangement: +36 30/390 1694

The estate is nearly three hectares with many old fruit trees, a large meadow and three lakes. A small museum of the objects of village life is also located at the cottage.

### Felsőszér 19/A, 9943 Szalafő

GPS: 46.870076, 16.345176

#### Balogh Family Farm: pumpkin seed oil and cake house

Opening hours: all year round

Visitors can get a glimpse into the secrets of oil pressing, and can taste their mouth watering speciality of Őrség with the help of a visual workshop.

### Városszer 116., 9942 Őriszentpéter

GPS: 46.836325, 16.425881

#### Malom Visitor Centre: community space, information centre

Opening hours: Mo-Fri: 8:30 am - 4:30 pm

A very lively scene where local product fairs and flea markets are held, among other things.



## Producers' Markets OF 24 CITIES

## LOCAL PRODUCE SHOPS

### Raabau 10., 8330 Feldbach

GPS: 46.961016, 15.919296

#### Obsthof Kaufmann

Opening hours: Mo-Fri: 7:00 - 9:00 am and 5:00 - 7:00 pm, Sat: 7:00 - 12:00 am, and 1:00 - 6:00 pm

The Kaufmann family sells fruit juice and fruit wine. In addition, the products of 20 local producers can be purchased at their shop

### Kalvarienbergweg 23., 8330 Feldbach

GPS: 46.949751, 15.880287

#### Obstbau Christandl: Fruit growing

Opening hours: Mo-Sat: 7:00 am - 6:00 pm

Their specialty is elderberry and rowan products. Not only do you get a glimpse into the world of fruit growing, you can also have the opportunity to taste them.

### Raabau 44., 8330 Feldbach

GPS: 46.967080, 15.895388

#### Milch & Käsehof Krenn

Opening Hours: Pre-registration is required: +36 76/9512021, +36 76/5109506, +36 76/7342124

They have high quality dairy products and cheeses.

### Auersbach 130., 8330 Feldbach

GPS: 47.000509, 15.865405

#### Lava Bräu und Whisky: Brewery & Whiskey Factory

Opening Hours: Mo-Thu: 9 am - 5 pm, Fri: 9 am - 2 pm

They welcome visitors and introduce the process of beer and whiskey production.

### Auersbach/Eggreith 26., 8330 Feldbach

GPS: 47.013867, 15.854159

#### Vulcano: A real ham paradise

Opening hours: Mo-Sun: 9:00 am - 6:00 pm

They are delighted to introduce their little world, and have you taste their delicious ham.

### Brunn 14., 8350 Fehring

GPS: 46.956543, 16.001095

#### The Kapper family winery

Opening hours: Pre-registration is necessary: +43 (0) 31552417

The Kapper family winery grows grapes on 9 hectares. They are open to hold wine tasting events for smaller and larger groups.

### Ringstraße 8., 8330 Feldbach

GPS: 46.951831, 15.888986

#### Sissi's Weinbar

Opening hours: Wed, Thu: 5:00 pm - 10:00 pm, Fri: 3:00 pm - 11:00 pm, Sat: 10:00 am - 10:00 pm

Wines can be tasted and bought at the winery in the Vulkanland area. You can also eat, Vulcano ham and cheese.

### Széchenyi tér 3-5., 8900 Zalaegerszeg

GPS: 46.844532, 16.846005

#### Kézműves Kincsek Folk Art Shop

Opening hours: Mo-Fri: 9:00 am - 5:30 pm, Sat.: 9:00 am - 12:30 pm

You can buy the work of handcraft and folk artists of Zala County.

### Hauptstraße 8., 8280 Fürstenfeld

GPS: 47.049698, 16.078951

#### Altstadt-Bauernladen Fürstenfeld

Opening hours: Mo, Wed., Thu., Fri.: 8:30 am - 6:30 pm, Tue., Sat.: 8:30 - 12:00 am

It is a family enterprise in the heart of Fürstenfeld. The visitor can buy the delicacies and specialities of the area.

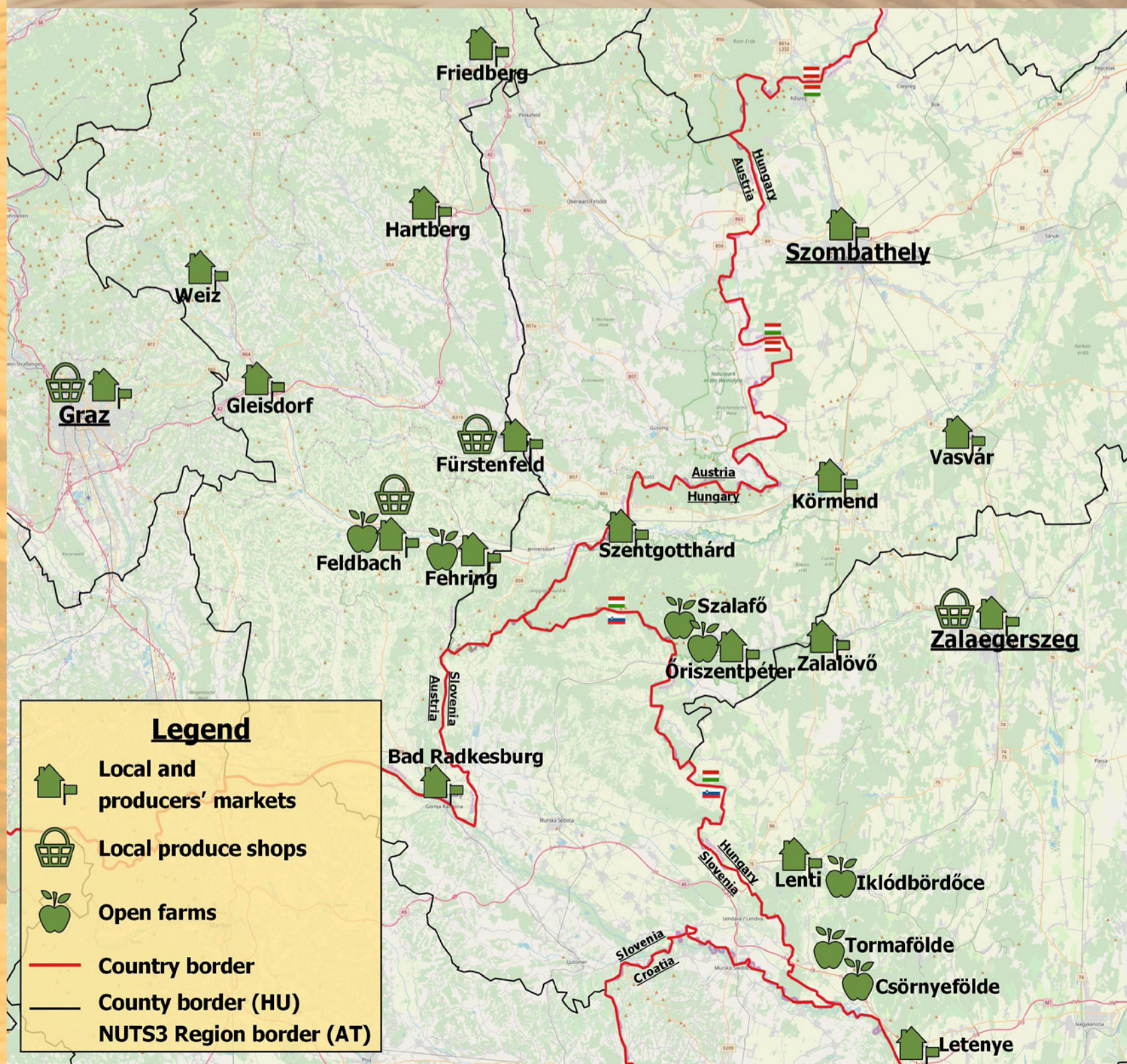
### Andersengasse 1, 8041 Graz

47.042126 15.448789

#### Bauernladen Gerlitz

Opening hours: Mo-Fri: 09:30-11:30, 16:30-18:30, Sat: 07:00-12:00

The Gerlitz family's local produce store offers not only their own products but also regional delicacies.



### Legend



Local and producers' markets



Local produce shops



Open farms



Country border



County border (HU)



NUTS3 Region border (AT)



## MARKETS

### Szövetkezeti utca 8., 8960 Lenti

GPS: 46.622030, 16.540255

#### Market

Opening hours: Thu., Sat.: 7:00 am-2:00 pm

Location: At the Market, local producers can also present their products to customers. The recently renewed environment makes shopping even more enjoyable.

### IV. Béla király utca, 9900 Körmen

GPS: 47.007885, 16.599520

#### Market

Opening hours: Mo, Sat.: 7:00 - 12:00 am

Location: Visitors can admire the rich offers of local producers. Customers can fill their baskets with delicacies and local specialties.

### Füzesi út, 9970 Szentgotthárd

GPS: 46.956490, 16.273575

#### Market

Opening hours: 1st Apr-31st Oct: Mo - Fri: 8:00 am - 5:00 pm, Sat: 8:00 - 12:00 am, 1st Nov: - 3rd Mar: Mo-Sun: 8:00 am - 4:30 pm, Sat: 8:00 am - 12:00 pm

The Market also offers the opportunity to buy quality goods from local producers.

### Bajcsy-Zsilinszky u. 3., 8868 Letenye

GPS: 46.433475, 16.723444

#### Market

Opening hours: Wed, Sat: in the morning

Location: The refurbished Marketplace offers opportunities for local producers, among others.

### Városszer 94., 9941 Óriszentpéter

GPS: 46.841005, 16.419442

#### Local Produce Market

Opening hours: Sat.: 7:00 - 12:00 am, (from June to Sept, on Wed. too).

Location: the park near the Sports place

### Járdányi u., 9800 Vasvár

GPS: 47.051976, 16.795043

#### Market

Opening hours: Wed.: 6:00 - 11:00 am

You can find real choice of delicacies in the market of Vasvár.

### Szabadság tér, 8999 Zalaölvő

GPS: 46.845588, 16.585617

#### Market

Opening hours: Wed, Sat. in the morning

Direct purchases from local Producers are also possible, mainly honey and various syrups.

### Alfred Merlini-Allee 7., 8490 Bad Radkersburg

GPS: 46.686917, 15.978750

#### Local Produce Market

Opening hours: Tue., Thu, Sat.: 2:30-5:00 pm

Location: in front of Parktherme Bad Radkersburg hotel. The aim of the Market is to introduce seasonal and fresh products.

### Hauptplatz, 8350 Fehring

GPS: 46.935509, 16.010317

#### Local Produce Market

Opening hours: Sat.: 8:00 - 12:00 am

Location: the main square of Fehring. The aim of the Market is to revive the market traditions too.

### Hauptplatz, 8240 Friedberg

GPS: 47.441417, 16.057722

#### Local Produce Market

Opening hours: Fri.: 7:00 am -1:00 pm

Location: The Producer's Market is located in the city's main square. Visit the Market for fresh delicacies and healthy ingredients.

### Hauptplatz, 8490 Bad Radkersburg

GPS: 46.687639, 15.988722

#### Local Produce Market

Opening hours: Fri: 1:00 - 4:00 pm

Location: A wide selection of quality goods are available.

### Hauptplatz 1-9., 8330 Feldbach

GPS: 46.954250, 15.889194

#### Local Produce Market

Opening hours: Sat.: 7:30 - 11:30 am

Location: The Market is located in the square in front of the tobacconist's. Regional delicacies await the visitors.

### Hauptplatz, 8200 Gleisdorf

GPS: 47.105972, 15.710222

#### Local Produce Market

Opening hours: Wed: 11:00 am - 4:00 pm, Sat.: 7:00 - 11:00 am

Location: The Producer's Market is located in the city's main square. All traders bring their own food and original craft products to the Market.

### Hauptplatz, 8280 Fürstenfeld

GPS: 47.051278, 16.076611

#### Local Produce Market

Opening hours: Sat: 4:00 - 7:00 pm, Sat.: 8:00 - 12:00 am

Location: The Producer's Market is located in the city's main square. Walking through the tables of local producers, it is impossible to stop the visitor from tasting the products.

### Kernstockplatz 4., 8230 Hartberg

GPS: 47.278575, 15.966777

#### Local Produce Market

Opening hours: Tue., Fri.: 12:00 - 17:30 pm

Location: The Market is held in front of the Monastery. You can buy quality, healthy foods on the Market.

### Hauptplatz, 8160 Weiz

GPS: 47.217222, 15.621833

#### Local Produce Market

Opening hours: Wed, Sat.: 7:00 - 11:30 am

Location: The Producer's Market is located in the city's main square. A wide selection of local and artisan products are on offer. Local flavours, high quality handicraft products are offered to the visitors

### Mérleg tér 1., 8900 Zalaegerszeg

GPS: 46.847337, 16.844420

#### Market, Market Hall

Opening hours: Tue-Sat.: 6:00 am - 1:00 pm, Sun.: 6:00 - 12:00 am

The customers are awaited with a wide variety of merchandise.

### Hunyadi J. út 5., 9700 Szombathely

GPS: 47.231044 16.628354

#### Market, Market Hall

Opening hours: Tue-Sun.: 5:00 am-3:00 pm

A wide selection of local and artisan products are on offer.

### Preßlgasse (Hauptplatz), 8230 Hartberg,

GPS: 47.281923, 15.968832

#### Local Produce Market

Opening hours: Sat: 8:30 - 12:00 am

Location: The Producer's Market is located on the town's main square. The health-conscious dining place also functions as a true community space.

### Teichstraße 14., 8161 Weiz

GPS: 47.214250, 15.644639

#### Local Produce Market

Opening hours: every second Fri 3:00-6:00 pm

Location: in the centre of Krottendorf quarter, at the „Garten der Generationen“. The visitors are offered a wide variety of high quality local produce.

### Ady Endre tér 5., 9700 Szombathely

GPS: 47.231650, 16.614889

#### Local Produce Market

Opening hours: Thu: 2:00 - 6:00 pm

The local produce of the sellers await the visitors in front of the County Cultural and Youth Centre. Healthy and fresh goods are sold. The mouthwatering selection is guaranteed.

### Bauernmarkt Kaiser-Josef-Platz, 8010 Graz

GPS: 47.068513 15.446639

#### Local Produce Market

Opening hours: Mo-Sat.: 6:00 am - 1:00 pm

Healthy and fresh goods are sold.

### Lendplatz, 8020 Graz

GPS: 47.075693, 15.430214

#### Local Produce Market

Opening hours: Mo-Sat.: 6:00 am - 1:00 pm

### Franz-Steiner-Gasse 18-20., 8020 Graz

GPS: 47.072180, 15.402620

#### Local Produce Market

Opening hours: Wed, Sat.: 6:00 am -1:00 pm

### Wiener Straße 351., 8051 Graz

GPS: 47.105129, 15.399106

#### Local Produce Market

Opening hours: Sat: 6:00 - 12:00 am

Every Saturday morning there is a buzz of life, with local vendors offering their finest delicacies.

## OPEN FARMS

### hrsz. 6161, 8873 Csörnyeföld

GPS: 46.504066, 16.628073

#### Simon cellar: winery

Opening hours: Upon pre-registration: +36 30/9794639

Lively, acid-rich, full-bodied, home-grown wines can be tasted.

### Szent János hegy, 8876 Tormafölde

GPS: 46.558487, 16.598718

#### Tuboly cellar: winery

Opening hours: Upon pre-registration: +36 30/9298436

The qualified wines from the family's craft winery are unfiltered, produced with their own yeast.

### Papszer 22., 9942 Szalafő

GPS: 46.871278, 16.353534

#### Cottage of the Taste of Órség: rural table and home restaurant service.

Opening hours: Sat.: 12:00 am - 6:00 pm

Those interested will get to know the unique taste of Órség. You get the opportunity to make delicacies, like dödölle, or a local cake.

### Templomszer 11., 9942 Szalafő

GPS: 46.867142, 16.365108

#### Ferencz cottage: exhibition farm and accommodation

Opening hours: whole year round

Walking through the farm the visitor becomes a participant of a true organic farm. In addition to knowing the secrets of animal husbandry, you can taste too.